

Appendix A: Installing PuTTY and logon to the CBS servers.

A step-by-step guide

Putty Download Page

www.chiark.greenend.org.uk/~sgtatham/putty/download.html

A Windows installer for everything except PuTTYtel

Installer: [putty-0.62-installer.exe](#) (or by FTP) (RSA sig) (DSA sig)

Checksums for all the above files

MD5: [md5sums](#) (or by FTP) (RSA sig) (DSA sig)

SHA-1: [sha1sums](#) (or by FTP) (RSA sig) (DSA sig)

SHA-256: [sha256sums](#) (or by FTP) (RSA sig) (DSA sig)

SHA-512: [sha512sums](#) (or by FTP) (RSA sig) (DSA sig)

The latest development snapshot. This will contain development code - in whatever state it's currently in. If you need a fix for a particularly crippling bug, you may well be able to find a fixed PuTTY here on above. On the other hand, these snapshots might sometimes be unstable.

(The filename of the development snapshot installer contains the snapshot date, so it will change every night. It is not offered by FTP, because FTP does not support the redirect mechanism that implements this.)

For Windows on Intel x86

PuTTY: [putty.exe](#) (or by FTP) (RSA sig) (DSA sig)

PuTTYtel: [puttytel.exe](#) (RSA sig) (DSA sig)

PSCP: [pscp.exe](#) (RSA sig) (DSA sig)

PSFTP: [psftp.exe](#) (RSA sig) (DSA sig)

Plink: [plink.exe](#) (RSA sig) (DSA sig)

Pageant: [pageant.exe](#) (RSA sig) (DSA sig)

PuTTYgen: [puttygen.exe](#) (RSA sig) (DSA sig)

A .ZIP file containing all the binaries (except PuTTYtel), and also the help files

Zip file: [putty.zip](#) (or by FTP) (RSA sig) (DSA sig)

A Windows installer for everything except PuTTYtel

Installer: [putty<version>-installer.exe](#) (RSA sig) (DSA sig)

Checksum for all the above files

MD5: [md5sums](#) (or by FTP) (RSA sig) (DSA sig)

SHA-1: [sha1sums](#) (or by FTP) (RSA sig) (DSA sig)

SHA-256: [sha256sums](#) (or by FTP) (RSA sig) (DSA sig)

SHA-512: [sha512sums](#) (or by FTP) (RSA sig) (DSA sig)

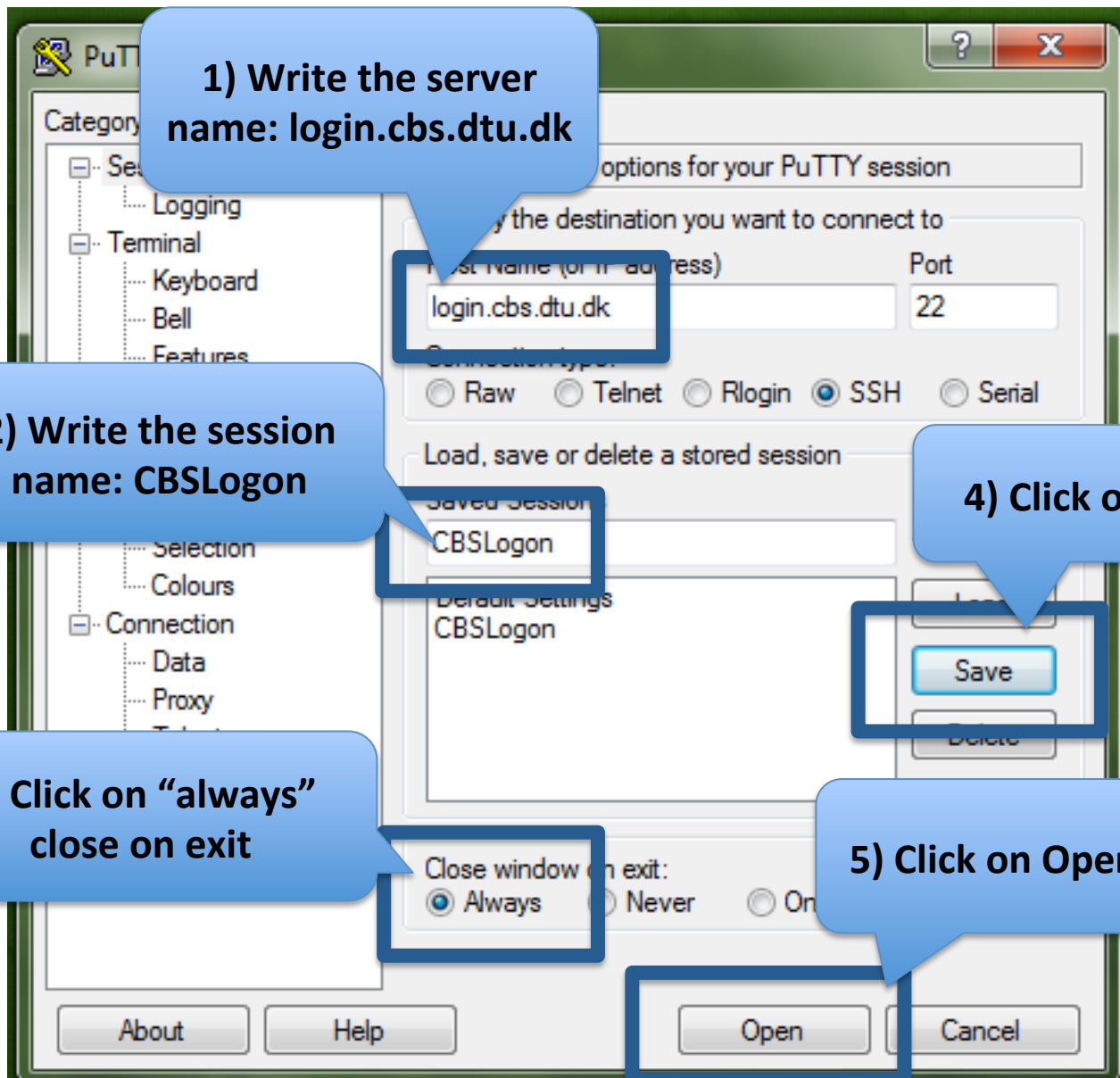
Source code

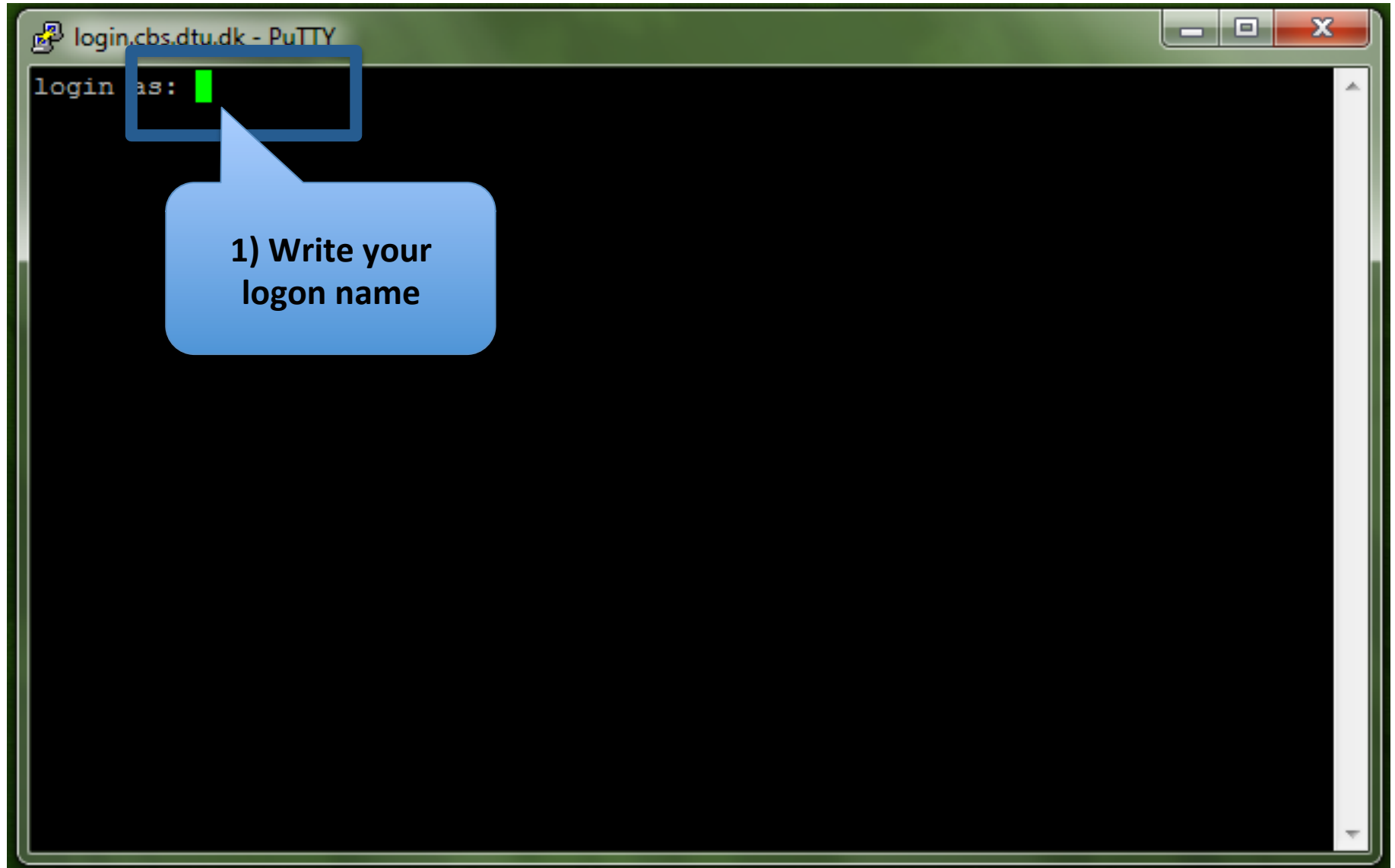
This is the source code for all of the PuTTY utilities.

For convenience, we provide several versions of the source code, for different platforms. The actual content does not differ substantially between Windows and Unix archives; the differences are mostly in formatting (filenames, line endings, etc).

1) Go to the PuTTY website

2) Download and install PuTTY





login.cbs.dtu.dk - PuTTY

login as: kasjens

Using keyboard-interactive authentication.

Password: █

1) Write your
password